



2020
OUR VISION
2020

SLPS Community Visioning Creating A System of Excellent Schools

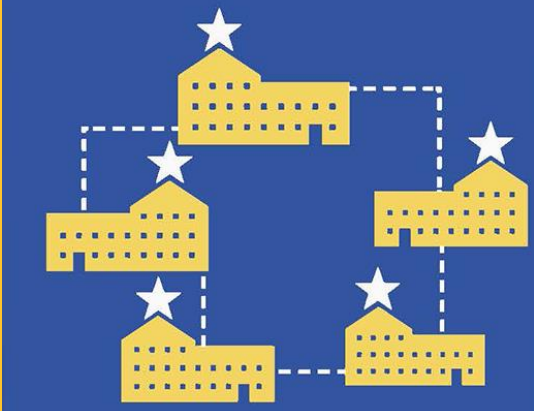
PURPOSE: Quality elementary and secondary education outcomes for students Pre-K – 12th grade.



The Next Phase: Building a System of Excellent Schools

District Priorities

The district creates a system of excellent schools



1

- Student Attendance & Enrollment
- Safe & Secure Schools
- Financial Sustainability
- Efficient & Equitable Staffing

The district advances fairness and equity across its system



2

- Workforce Diversity
- Equitable Resource Distribution
- Trauma-Informed Classrooms

The district cultivates teachers and leaders who foster effective, culturally responsive learning environments



3

- Career Pathways
- Teacher Retention
- Culturally Responsive Schools

All students learn to read and succeed



4

- Student Reading Proficiency
- College & Career Readiness
- English Language Learner Success

Community partnerships and resources support the district's Transformation Plan



5

- Volunteer & Mentor Engagement
- Community & District Pride
- Community Partner Investment

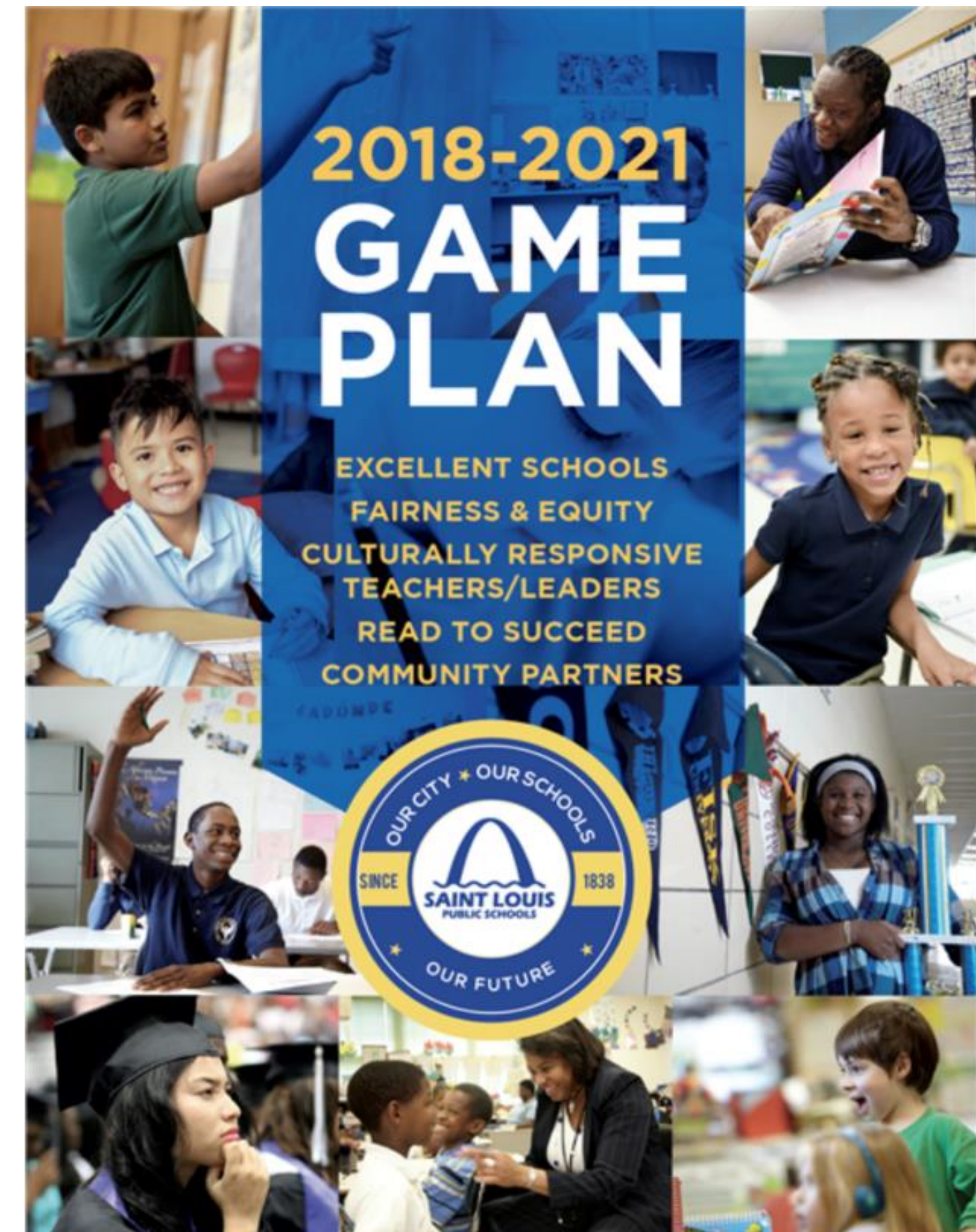


VISIONING IS ALIGNED TO THE TRANSFORMATION PLAN

SLPS Pillar #1

The District Supports a System of Excellent Schools.

1.1 By 2021, SLPS will maintain full accreditation and 100% of individual schools will show progress toward full accreditation.



HIGHLIGHTS OF THE PAST 10 YEARS

- ★ **Full Accreditation**
- ★ **Improved Academic Performance**
- ★ **Improved Fiscal Stability/Balanced Budget**
- ★ **Expanded Early Childhood Education**
- ★ **Innovations in School Models and Partnerships**

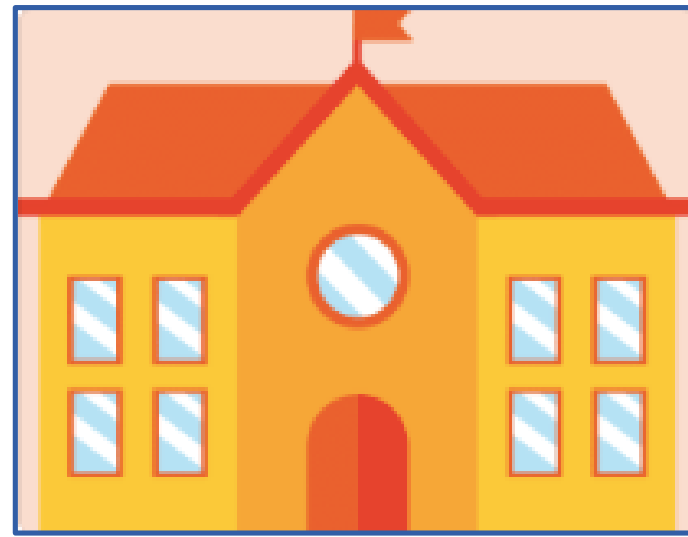


DISTRICT PROGRESS OVER PAST 10 YEARS



	2007-08	2017-18
DROPOUT RATE	13.9	8.2
GRADUATION RATE	54.7	79.3
ATTENDANCE	88.6	93.9
OUT OF SCHOOL SUSPENSIONS	1720	444
DISCIPLINE INCIDENT RATE (PER 100)	6.3	2.3
ACT SCORE	16.1	16.7
PRE-SCHOOL ENROLLMENT	1142	2100
180 - DAY POSITIVE PLACEMENT	65.8	89.5
STUDENT TO TEACHER RATIO	18-1	16-1
STAFF WITH ADVANCED DEGREES	48.4	51.7

HIGHLIGHTS: SUCCESSES 2007 - 2017



STABILITY

- Fiscal health, we moved from an \$66M deficit to having a reserve
- Superintendent has led since 2008
- School leader retention has improved
- Systems in place to make data-driven decisions

ACCREDITATION

- Moved from being unaccredited in 2007 to fully accredited in 2017
- The District earned its highest score on the State's Annual Performance Review, growing from 43.2% in 2013 to 78.5% in 2018.

ACADEMIC PROGRESS

- Academic APR scores have improved by 55% between 2013 and 2018
- Graduation rates have risen by 50% since 2001
- 89.5% of 2018 graduates enrolled, employed, enlisted 180 days after graduation

COMMUNITY CREDIBILITY

- Authority returned to elected Board of Education
- More partnerships with nonprofits
- Donors and corporations invested more than \$20M since 2015
- More volunteers

POINTS OF PRIDE



Kennard, Busch, Nottingham, Woerner
(4 National Schools of Character)



Healthy Schools Program

Adams, Carr Lane, Gateway Elementary, Gateway Middle, Gateway Michael (Gold), Hickey, Lyon Academy, Mullanphy, Oak Hill, Washington Montessori, Woodward



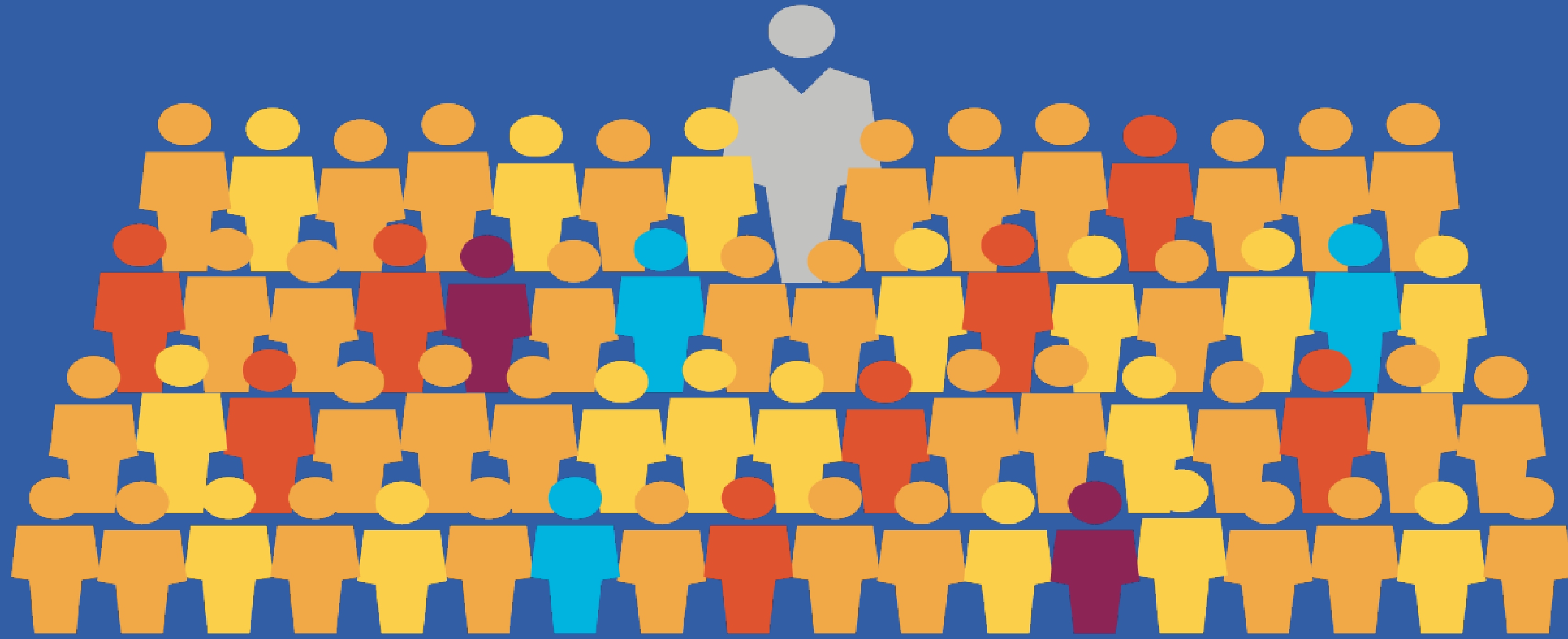
Mallinckrodt, Kennard, McKinley CJA, McKinley CLA, Metro, Pierre Laclede, Wilkinson
(7 National Blue-Ribbon Schools)



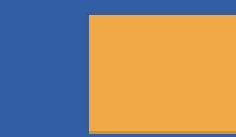
**Metro (#5 in Missouri)
Collegiate (#12 in Missouri)**



SLPS by the Numbers



Total Students 21,862



Black
17,273
80%



White
2,871
13%



Hispanic
1,081
5%



Asian
637
3%

UNIQUE TO SLPS

Choice/Magnet Schools - \$10M

- ★ More than 70% of SLPS students choose schools with specific themes or majors and don't attend neighborhood schools

Early Childhood Education - \$19M

- ★ Over 2,100 students enrolled in free, quality Pre-K

Special Education Funding - \$6M

- ★ Cost to pay the Special School District for VICC students who receive services



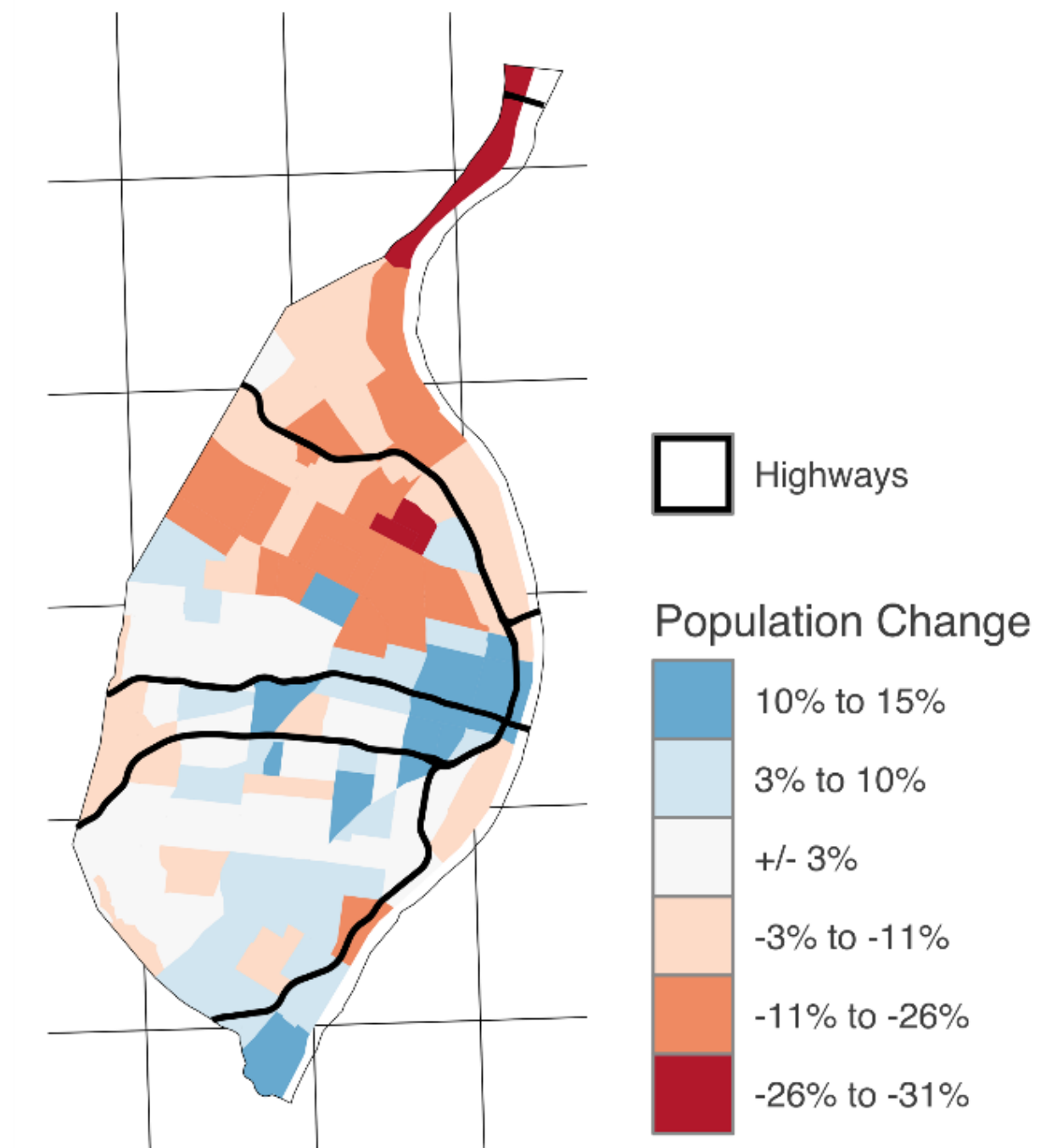
DECLINING CITY/STUDENT POPULATIONS

- ★ Between 2010 and 2018, St. Louis City's overall population decreased by **5.2%**, a rate of **-0.7%** per year
- ★ Between 2007 and 2018, the population of school-age children (5-19) decreased by **18.6%**, at a rate of **-2.3%** per year.
- ★ In 2007-08, there were **103** public schools (SLPS and Charter) serving **60,642** children.
- ★ In 2015-16, there were **98** public schools (SLPS and Charter) serving **49,939** children.
- ★ In 2019-20, there are **110** public schools (SLPS and Charter) serving **45,919** children.

Fewer Students. More Buildings.

Population Change, 2010-2017

St. Louis City Neighborhoods

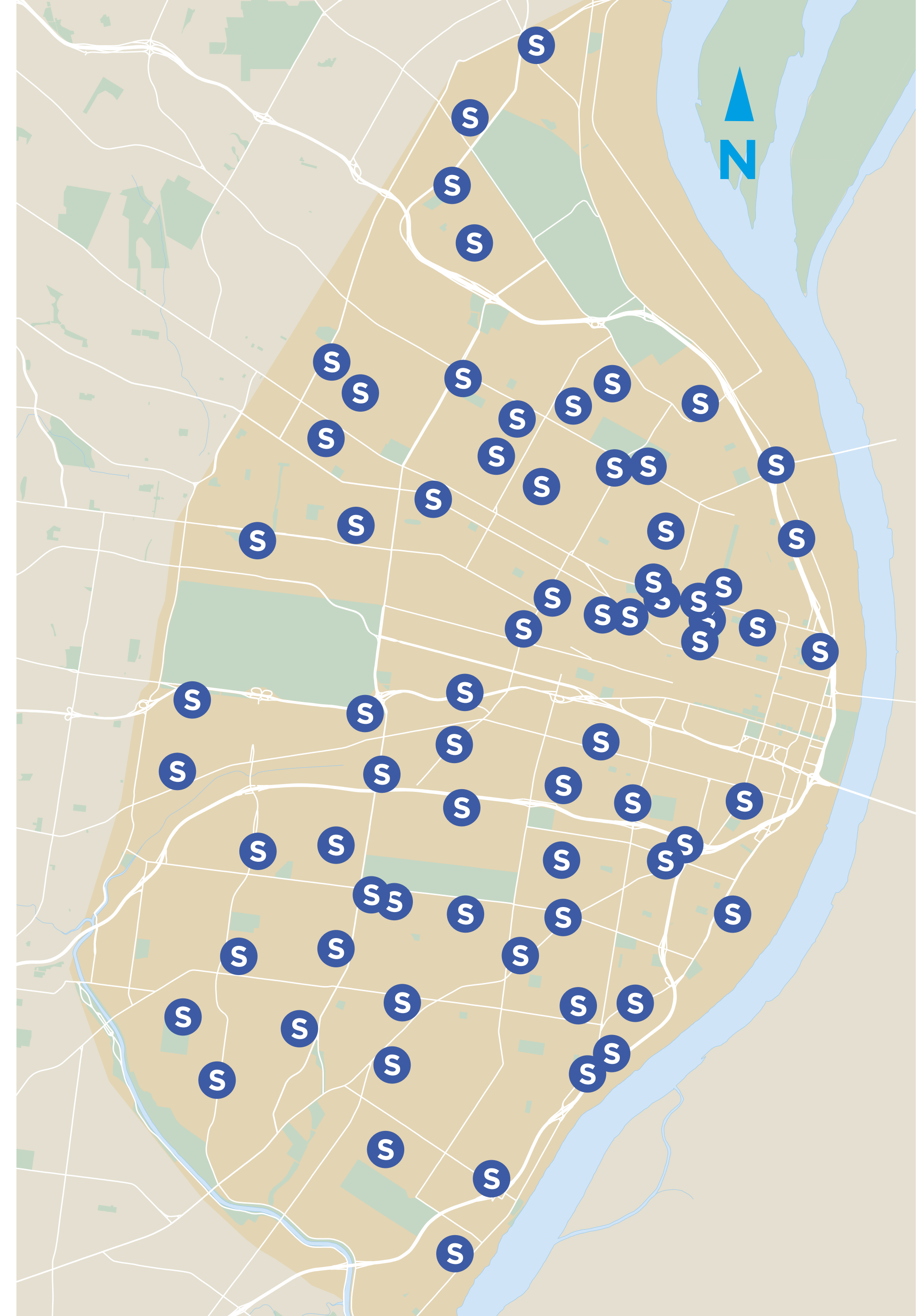


Data via U.S. Census Bureau
Map by Christopher Prener, Ph.D.

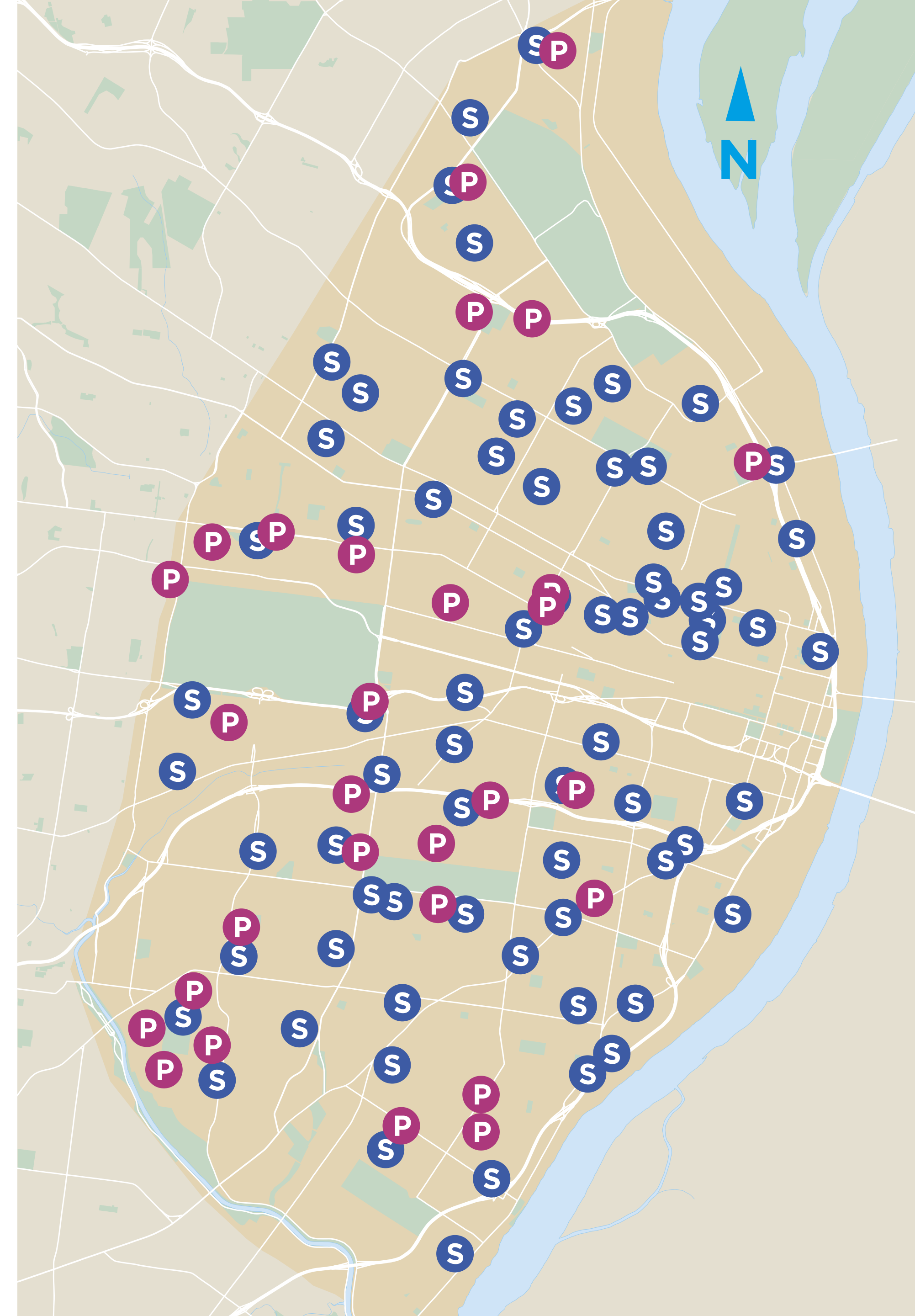
**System is all schools, charter and public*

*Data from the US Census Bureau, IFF 2007-08
Study, SLPS SIS System, DESE*

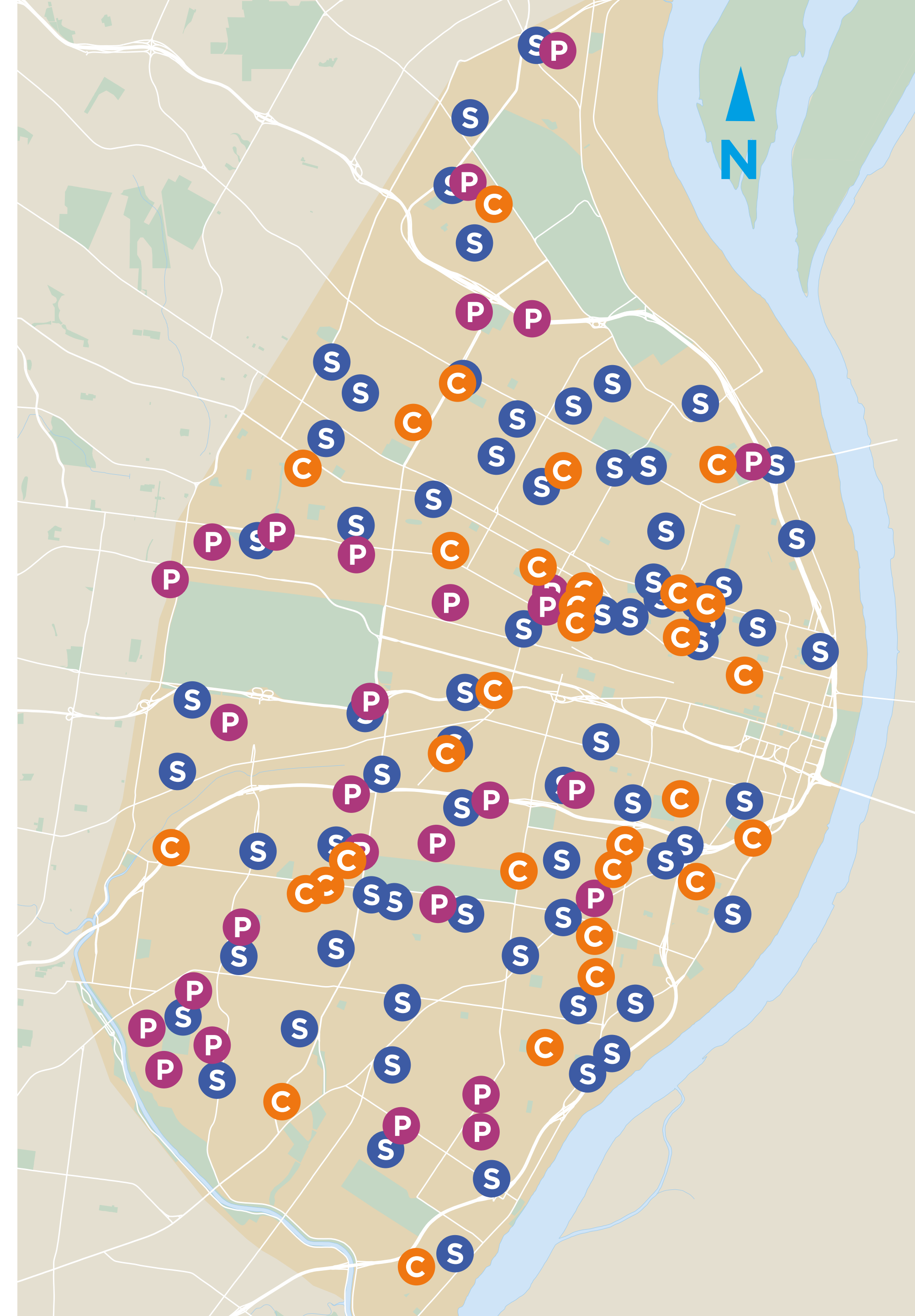
S SLPS Buildings



- S** SLPS Buildings
- P** Private Schools

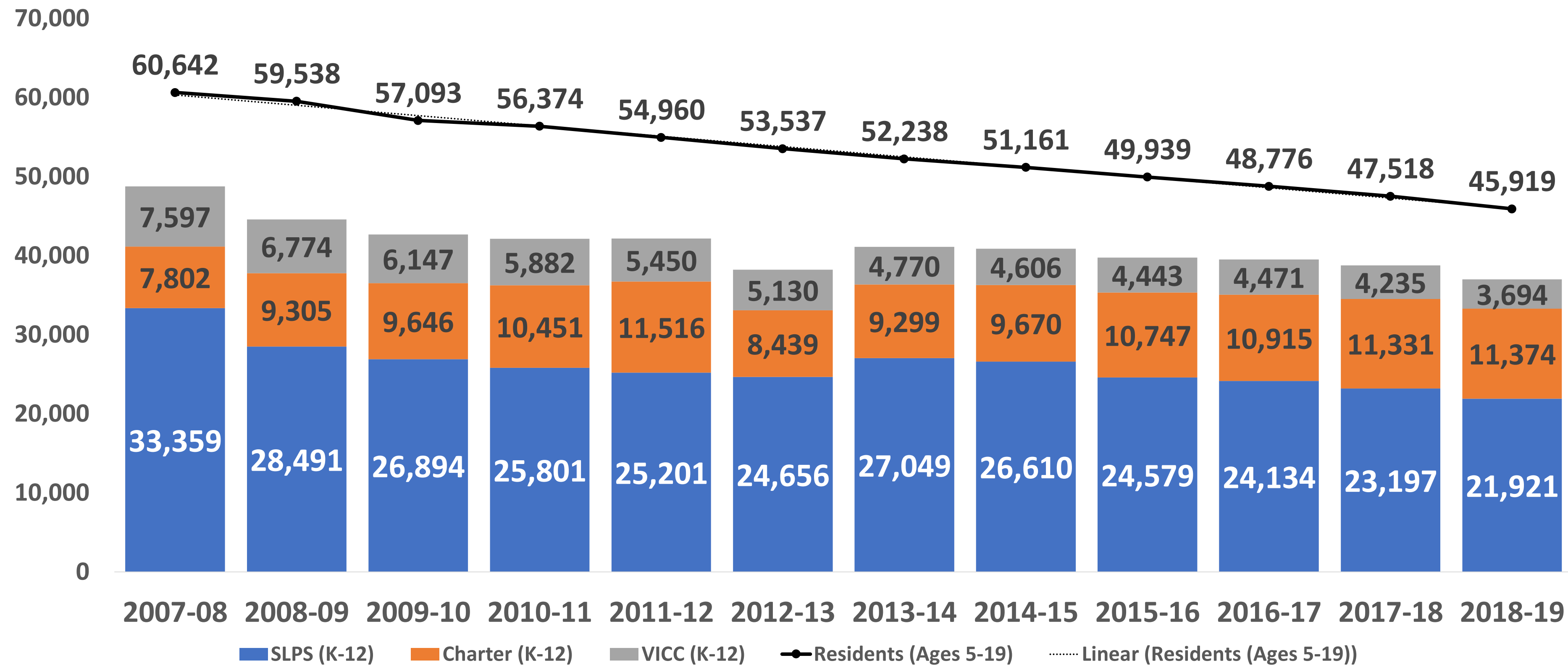


- S** SLPS Buildings
- P** Private Schools
- C** Charter Schools





SAINT LOUIS CITY PUBLIC SCHOOL ENROLLMENT



Note: Imagine Charter Schools closed at the end of SY 2012. Youth Resident Data not available for 2008-2010.

The number of children ages 5-19 in the city has decreased by **24%** (-15K children).
 The number of children attending public schools in the city has decreased by **24%** (-12K children).

The number of children attending district schools has decreased by **34%** (-11.5K).
 The number of children attending charter schools has increased by **46%** (+3.5K).
Fewer Children. Fewer Students. More Choice.



BUILDINGS AND AVERAGE STUDENTS PER BUILDING SAINT LOUIS CITY AND COMPARISON DISTRICTS (2018-19)

	SLPS DISTRICT	STL CHARTERS	TOTAL STL CITY SYSTEM	HAZELWOOD	ROCKWOOD	SPRINGFIELD
ELEMENTARY	45	19	64	23	20	38
MIDDLE	9	8	17	6	6	9
HIGH	15	6	21	3	4	5
TOTAL BUILDINGS	69*	33	102	32	30	52
# STUDENTS	21,862	11,374	33,295	17,405	22,722	25,778
AVG. STUDENTS PER BUILDING	318	345	326	545	757	496

* Does not include alternative education sites, but does include alternative grade configurations.

The Saint Louis Public School District is **operating the schools with the smallest average student populations.** The total Saint Louis City System has the second-smallest average.

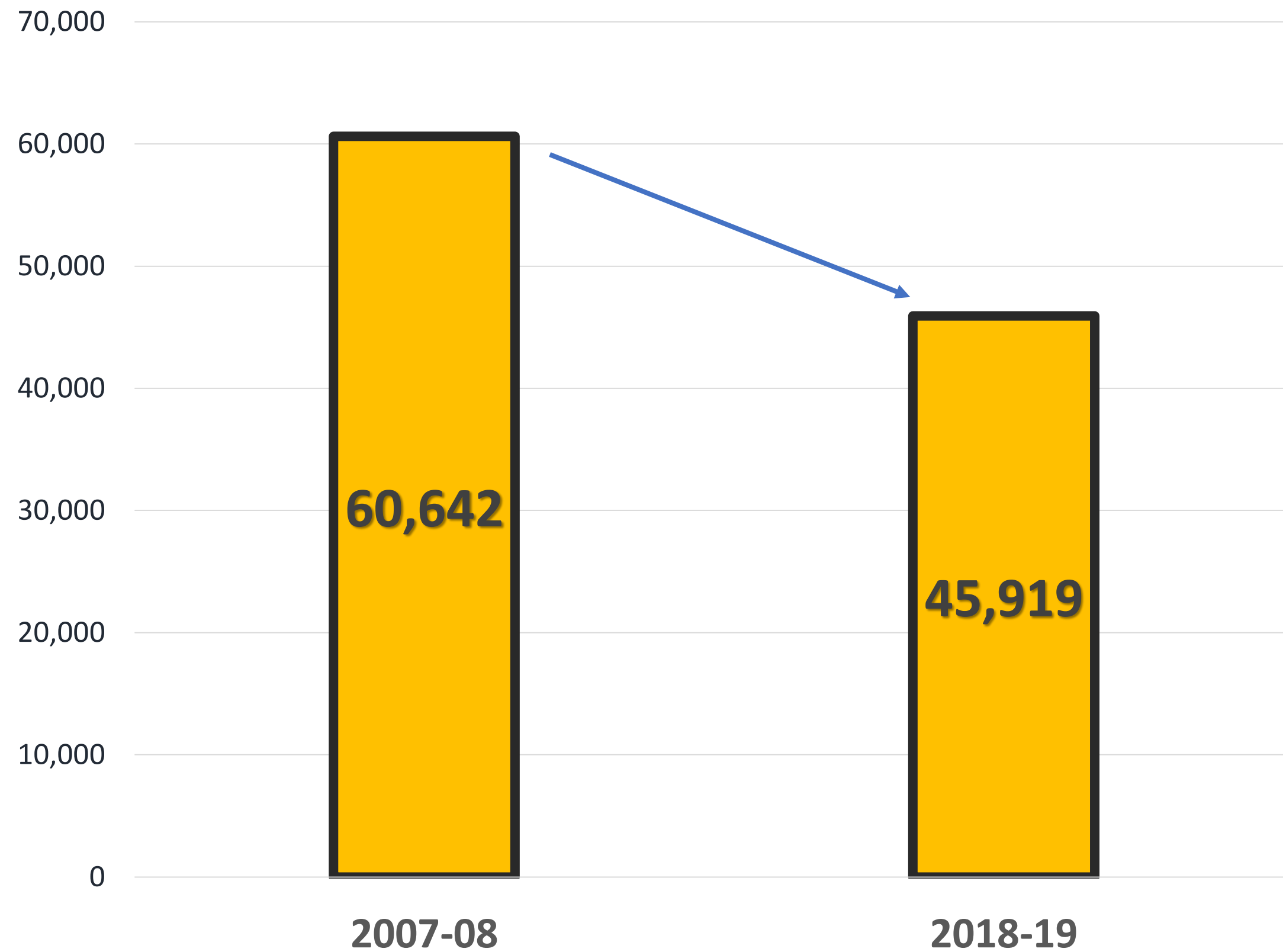
Fewer Students. More Buildings.



GETTING THERE: CHALLENGES

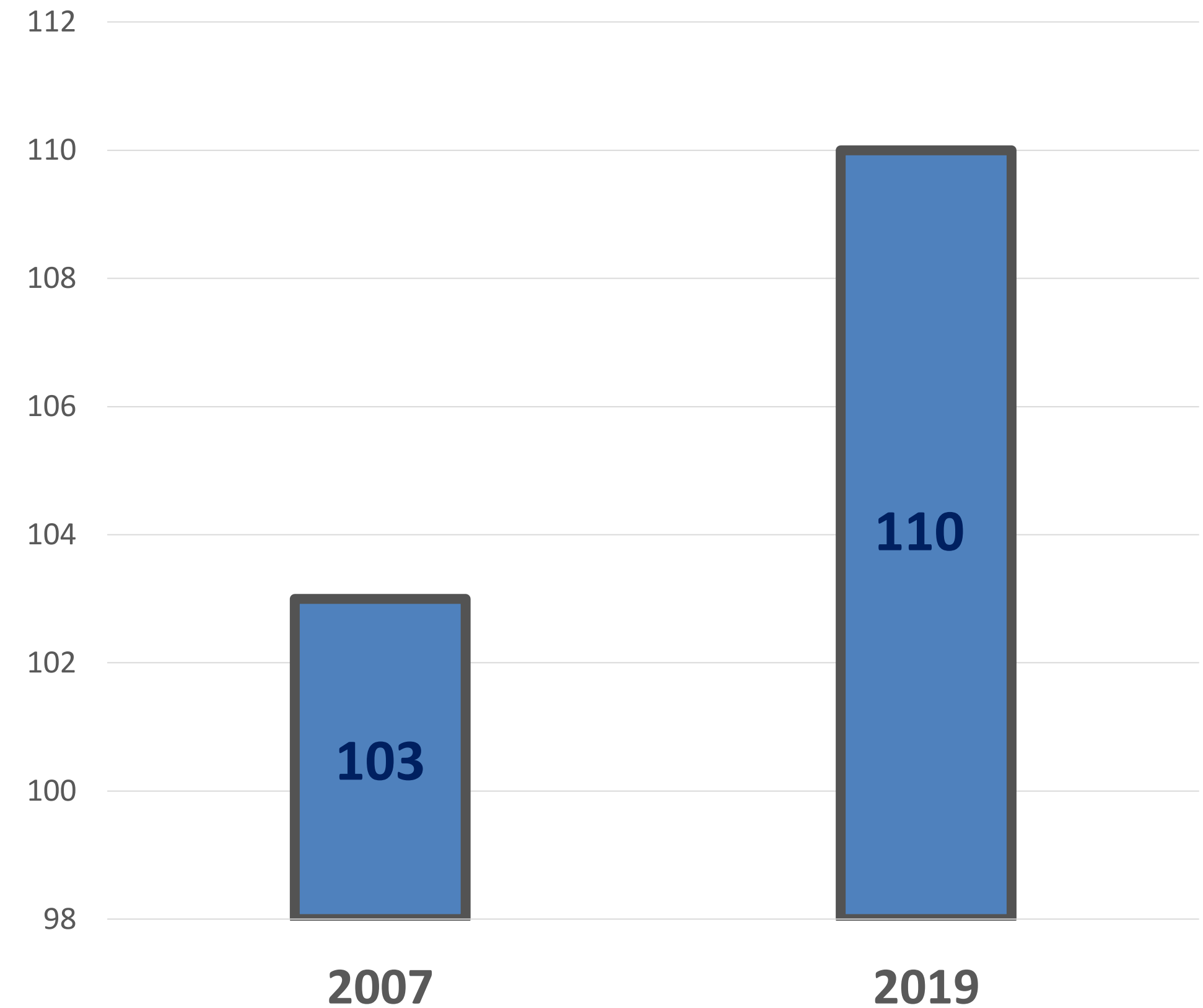
Declining City Population

Residents Under 18 in STL City



Schools in the City

Number of Public Schools in STL



STL SYSTEM: COST OF TRANSPORTATION

2018-19	SLPS District	STL Charters	TOTAL STL CITY SYSTEM	Hazelwood	Rockwood	Springfield
Cost of Transportation	28 M	8 M	36 M	8.6 M	10.4 M	10.8 M
Per Pupil	\$1,415	\$700	\$1,153	\$503	\$498	\$434

Note: Transportation includes home to school, field trips, and athletic activities.



More Choice = More Money on Transportation, especially by SLPS.

CHALLENGES: SPENDING ON WHAT MATTERS



More
Money
Spent on
Facilities

=

Less
Money
Spent in
Classrooms



A SYSTEM OF EXCELLENT SCHOOLS

My Vision:

- ★ **Newer School Facilities**
- ★ **Increased Technology**
- ★ **Increased Student Support Services**
- ★ **Increased Advanced Placement and Dual Enrollment Courses**
- ★ **Increased Elective Courses**
- ★ **Increased Clubs and Sports**
- ★ **Fully Staffed Schools**
- ★ **Competitive Teacher/Staff Compensation**
- ★ **Better Bus Schedules**
- ★ **Restart or Reboot Schools**
- ★ **Innovative School Models**

PREVIOUS CRITERIA AND CONSIDERATION

- ★ **Academic Performance:** 2016-2019 years of academic, attendance, graduation, college and career data
- ★ **Capacity:** Maximum building capacity divided by its average 3-year enrollment
- ★ **Building Condition:** Facility Capital Action Plan (FCAP) outlines age, condition, deferred maintenance and capital improvement projects and categorizes projects by building, system and priority
- ★ **City-Wide Development:** Data collected from the City Planning Department
- ★ **Feeder Patterns:** Analysis of pathways for transitioning students from elementary to middle, middle to high



A SYSTEM OF EXCELLENT SCHOOLS



What do YOU envision?

- ★ When you think of a System of Excellent Schools, what comes to mind?
- ★ What must be the District's **top priorities** to achieve that vision?
- ★ For each priority, what are the most important changes for the District to make?
- ★ What critical factors should the District consider when determining whether to close and consolidate schools?

THANK YOU!

