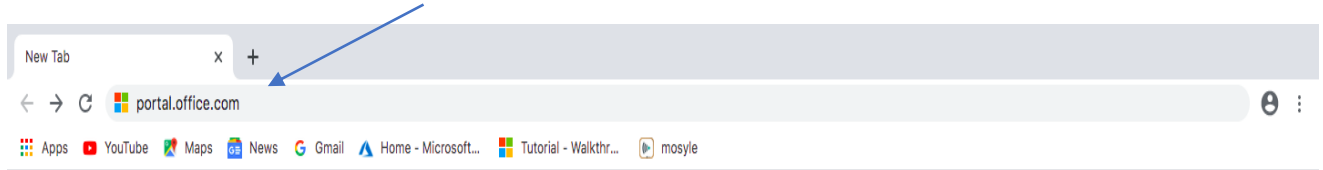


How To Access Teams

Go to Chrome. Type in portal.office.com in the url.



Gmail Images



Search Google or type a URL



Working...



Mosyle



Tyler SIS 360



MSFTGuest L...



http://slsp.org/



Working...



Web Store

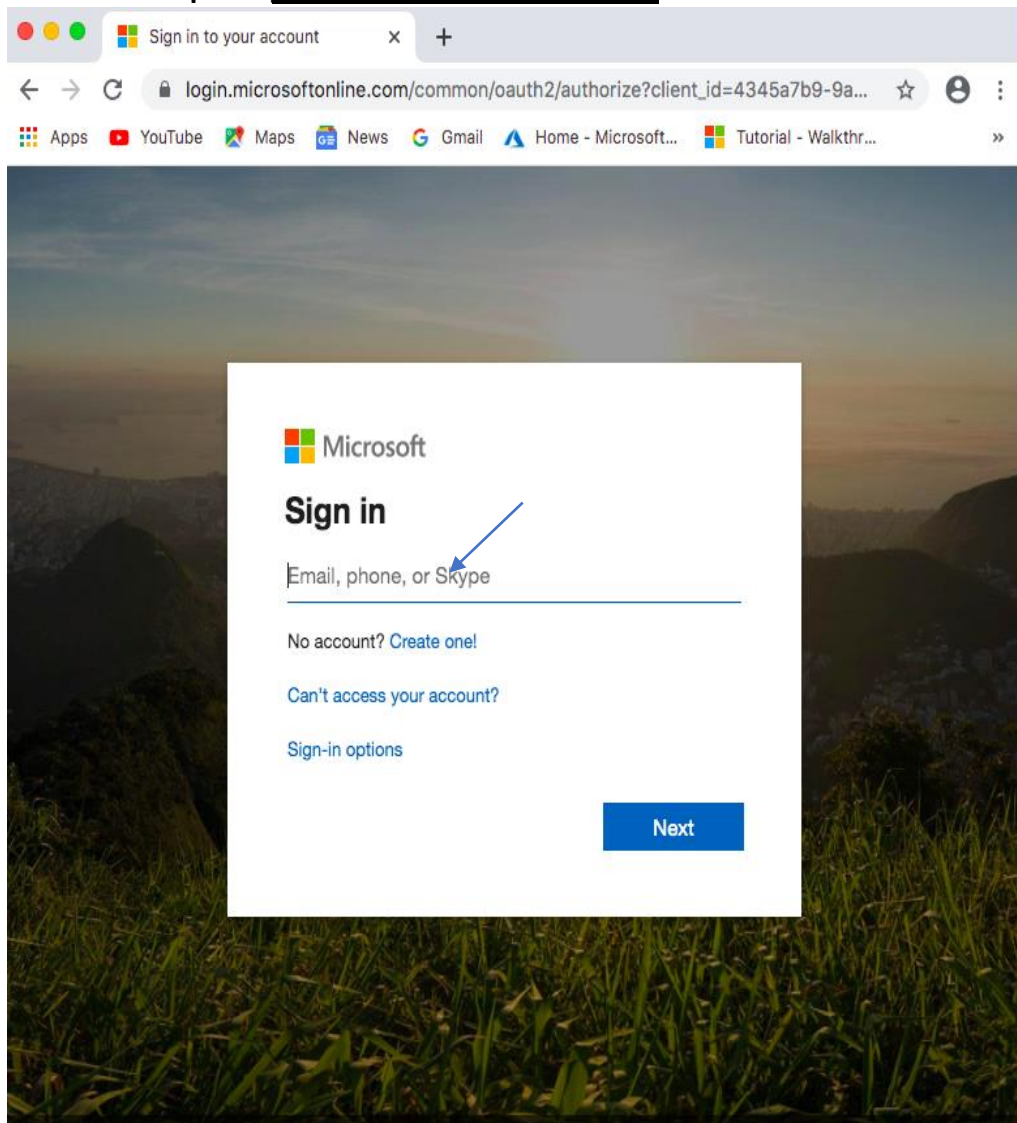


Add shortcut

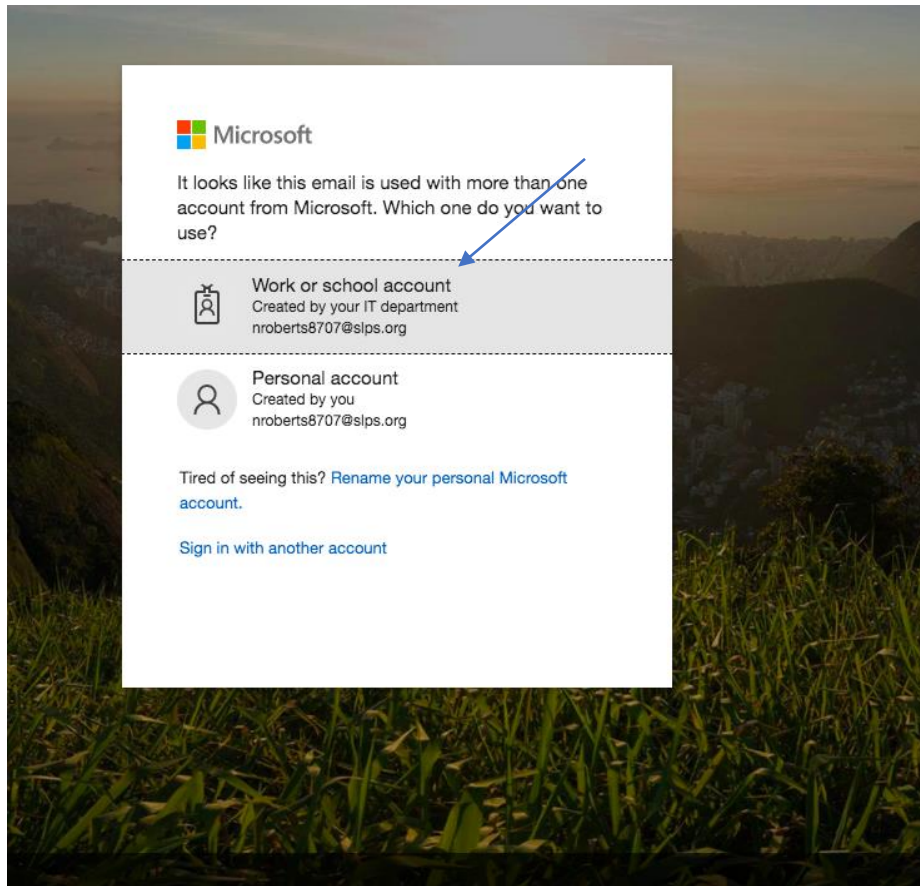
To all doctors, nurses, and medical workers, thank you

Customize

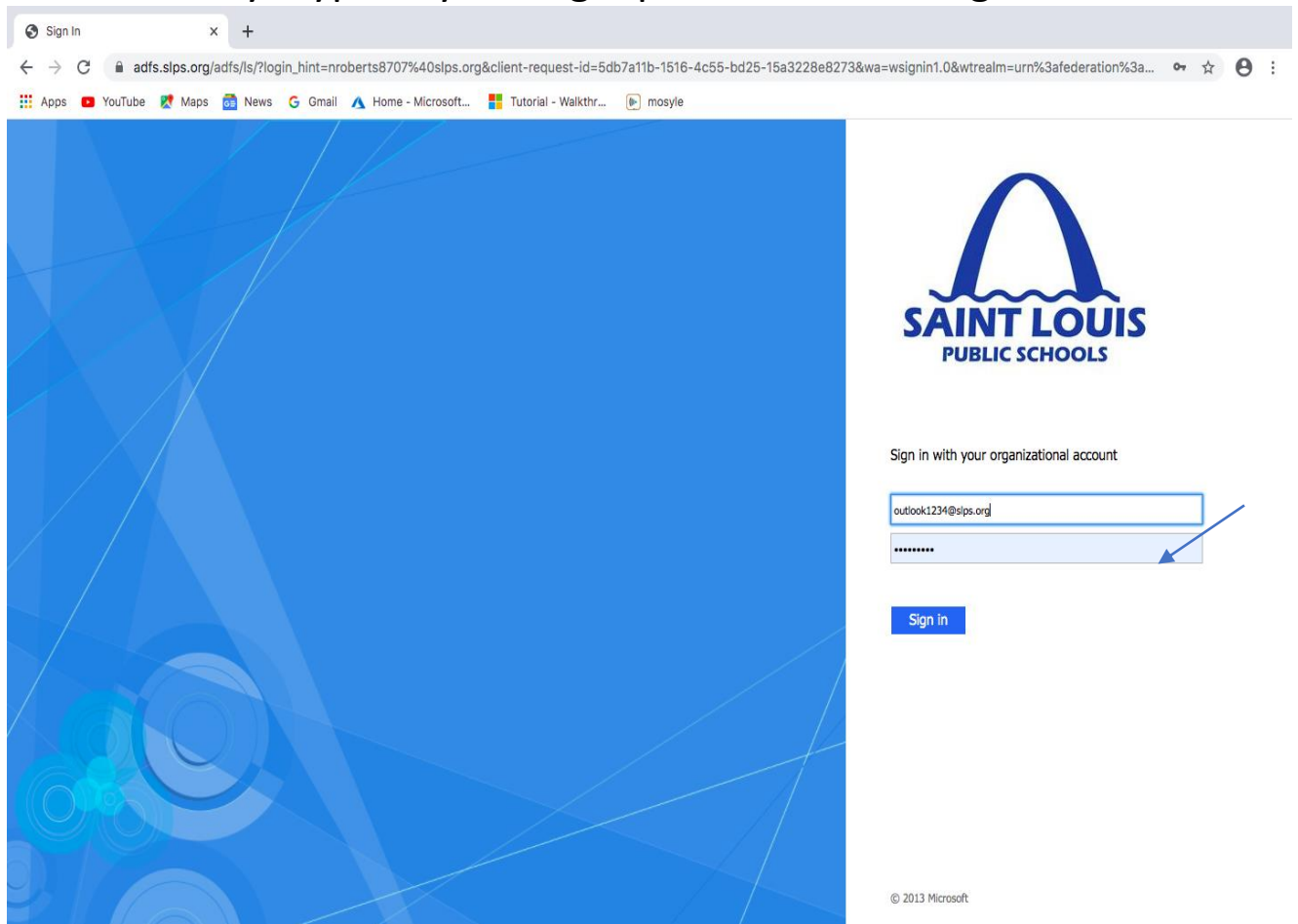
You will get to the login page. Type your username. Your username is your first initial, first seven letters of your last name, your four- digit id number@slps.org. For example: jjeep1234@slps.org. Click next.



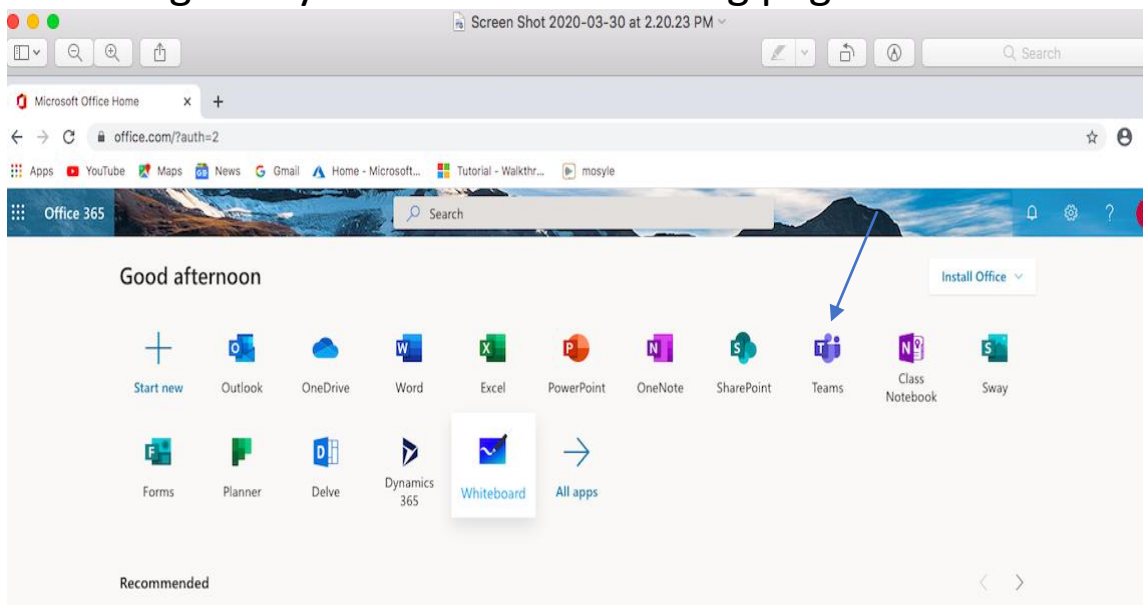
Choose work or school account.



You will get this page. Your username information will appear automatically. Type in your login password. Click sign in.



You will get to your Office 365 landing page. Click on Teams.



Go to the Teams that your teacher has directed you to go to. You will find your Teams on the far-left side. See arrow. I have chosen Spring Team.

