



Report to the Community



Desegregation Dollars

Craton Liddell's family filed a lawsuit in 1972 that brought integrated education to hundreds of thousands of St. Louis' school children. The case was settled in 1999 when the federal government ordered the State of Missouri to pay \$180 million to the District, effectively ending court supervision and monitoring.

In 2011, the litigants accepted a three-year proposal to allocate \$96.1 million from the Desegregation Capital Fund to eliminate the fund deficit and fund programs. Saint Louis Public Schools is proud to report that it has been using these funds wisely to achieve the following goals:



Expand the Early Childhood Education Program



Expand the Parent/Infant Interaction Program



Train and mentor principals and teachers



Fund magnet school transportation



Invest in technology

Gold boxes are used throughout this report to provide additional information on how SLPS students have benefited from the Desegregation Capital Fund.

SLPS by the Numbers

2008 **2013**

1,282



2,166

Preschool Students

89%



94%

Average Daily Attendance

Unaccredited



Provisionally Accredited

District Status

56%



68%

Graduation Rate

F



A

SLPS Food Service Grade

1,500



4,300

SLPS Volunteers



June 2014

Dear Saint Louis Public Schools Stakeholders,

Thank you for giving us this opportunity to share some of the Saint Louis Public School District’s achievements over the past five years. It hasn’t always been easy, but through collaboration with the staff and the community, the District has started to show positive changes.

SLPS lost accreditation in 2007, and the District was in crisis. Since that time, the District has taken meaningful strides to improve academics, restore fiscal stability, expand educational options, upgrade aging facilities, develop community partnerships and provide enhanced professional development and ongoing support to teachers and staff.

After facing what—at many times—felt like an uphill battle, SLPS was granted Provisional Accreditation on October 16, 2012. It was a significant accomplishment, and we look forward to many more, as the District continues to push to make improvements and provide students a world-class education.

We are proud to be a part of these efforts and want to extend special thanks to Superintendent Kelvin R. Adams, PhD, and the dedicated faculty and staff who work tirelessly on behalf of the 27,000 students in our District every day.

Sincerely,

Saint Louis Public Schools Special Administrative Board



Rick Sullivan
Chief Executive Officer



Melanie Adams
Vice President



Richard K. Gaines
Board Member



Academics: All Hands on Deck

Every employee in the Saint Louis Public Schools shares the same goal: to boost the academic achievement of students and prepare them for successful futures.

Based on the most recent Missouri Department of Elementary and Secondary Education (DESE) Annual Performance Reports (APR), seven SLPS schools earned at least 90% of all possible points to qualify for Accreditation with Distinction, the highest recognition available. Kennard and Metro each earned a perfect score of 100%. An additional 13 SLPS schools earned at least 70% of all APR points to qualify for Full Accreditation.

Accredited with Distinction

- Bryan Hill Elementary School
- Buder Elementary School
- Kennard Classical Junior Academy
- Mallinckrodt Academy of Gifted Instruction
- Metro Academic & Classical High School
- McKinley Classical Leadership Academy
- Wilkinson Early Childhood Center

Fully Accredited

- | | |
|--|--|
| Busch Middle School of Character | Gateway Michael Elementary School |
| Carnahan High School of the Future | Gateway STEM High School |
| Cleveland NJROTC High School | Gateway Elementary School |
| Clyde C. Miller Career Academy | Lexington Elementary School |
| College Preparatory High School at Madison | Mason School of Academic & Cultural Literacy |
| Cote Brillante Elementary School | Shenandoah Elementary School |
| | Stix Early Childhood Center |

Accelerating Toward Full Accreditation

As a district, Saint Louis Public Schools is provisionally accredited. The work continues, and the District is in the process of implementing the SLPS Transformation Plan. According to the plan, a tiered approach will be taken to accelerate progress. This will provide the highest level of resources to schools in the Superintendent's Zone, which are struggling the most academically. All employees and stakeholders are pushing hard every day to help SLPS reach and surpass Full Accreditation.



The Five Pillars of the SLPS Transformation Plan

OBJECTIVE

1

Employ rigorous standards and monitor student progress

OBJECTIVE

2

Use data to improve instruction and decision-making

OBJECTIVE

3

Expand capacity to develop, deliver, and supervise instruction

OBJECTIVE

4

Cultivate a shared vision of SLPS embraced by community and stakeholders

OBJECTIVE

5

Ensure all SLPS preschool children are prepared for kindergarten

To see the full SLPS Transformation Plan, visit www.SLPS.org/TransformationPlan.



COMPUTER LABS



NEW PLAYSAPES



NEW WINDOWS



ATHLETIC IMPROVEMENTS



All SLPS classrooms are air conditioned, thanks to two important bond measures. On Nov. 7, 2000, voters approved an \$80 million bond issue for HVAC projects. On April 8, 2002, a \$120 million bond issue passed for additional HVAC projects. Both bond issues were approved by more than 70% of city voters.

Prop S Projects



Construction crews have been hard at work renovating schools to the great benefit of Saint Louis Public Schools students and staff. Passed by nearly 75% of city voters on August 3, 2010, Proposition S is a \$155 million bond measure that provides the District with funding to renovate its schools—some of which are more than 100 years old.

Each of the District's schools have enjoyed improvements or are on the list for future improvements, ranging from new playscapes, kitchens and classrooms to updated science labs, cafeterias and extracurricular facilities.

For additional information about Proposition S, please visit www.slps-props.com.



ADA ACCESSIBILITY



OUTDOOR CLASSROOMS



362

Individual Prop S
Projects

Individual projects include new science and computer labs, lead abatement, ADA compliance measures, new kitchens and restrooms, upgraded athletic facilities and playscapes, additional early childhood classrooms and basic building improvements like new roofs, windows and asphalt.



3,000

Construction Jobs
Created



42%

Workers are
Minorities or Women



39%

Contracts to
Minority-Owned
Businesses



9%

Contracts to
Women-Owned
Businesses



“The PACE program provided extensive, practical and relevant support to me. Dr. Alice Roach, who led the program the first year, played a big role in refining my leadership skills.”

– Jacara Sproaps
Principal at Dunbar Elementary, PACE Class of 2012

\$6.9M

Nearly \$3.6 million from the Desegregation Capital Fund was allocated to the District in 2011 to train and mentor current and future SLPS principals over three years; \$3.3 million was allocated for the St. Louis Plan.



Investing in Educators

Preparing children for the “real world” is rewarding—but difficult—work. Along with ongoing professional development, Saint Louis Public Schools has developed several targeted programs to assist teachers and principals in their efforts to become the best educators they can be.

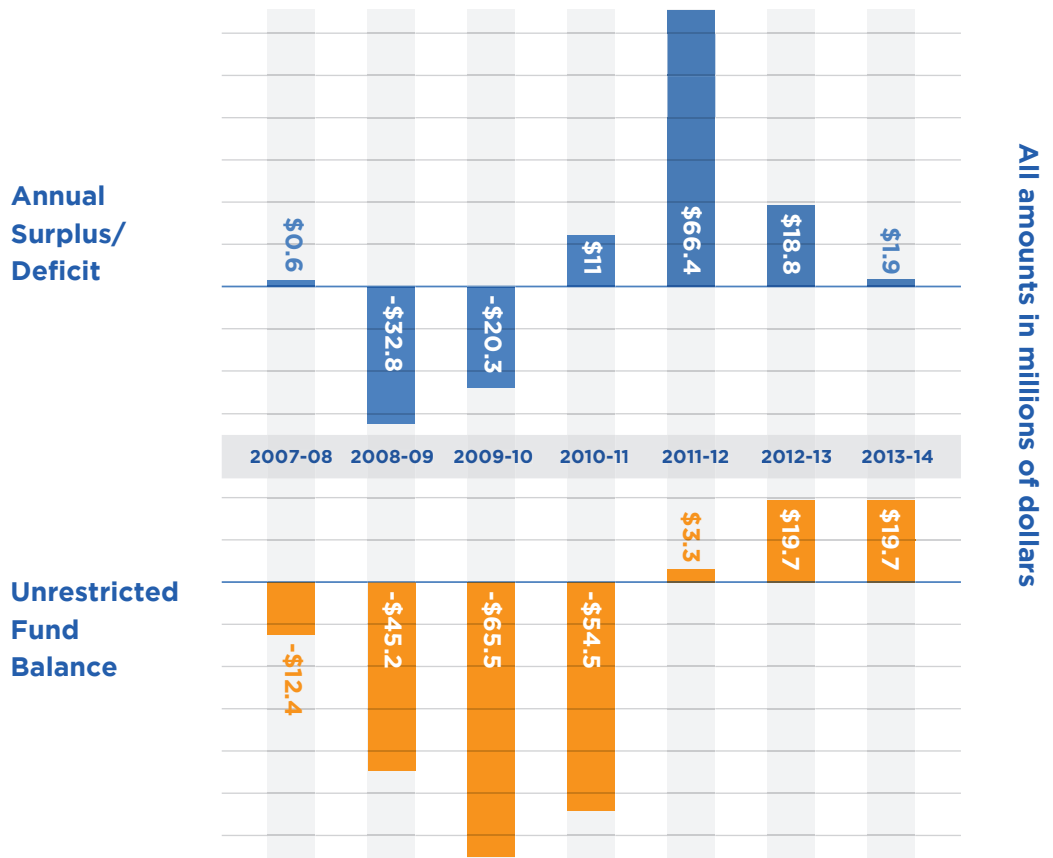
One of the District’s most innovative offerings is the **St. Louis Plan**. Focusing on first-year teachers, as well as tenured teachers needing specific types of professional development, the program provides support in four domains: planning and preparation, classroom management, instructional techniques and professionalism.

SLPS launched the **Teachers Matter Initiative** in 2013 to welcome new teachers and provide tangible, ongoing support. An experienced teacher was identified at each school to help mentor new colleagues. “New Teacher Voice” sessions with Superintendent Dr. Kelvin R. Adams allowed participating teachers to discuss any challenges they were facing and suggest ways the District can better meet their needs.

PACE (Preparing Aspiring Certificated Educators) is a 10-month immersion training program for rising District leaders seeking to be principals. Participants meet weekly after school and on Saturdays once a month to engage in collegial discussion and learning activities about successful school leadership.



Saint Louis Public Schools Financial Condition



The District is operating with a balanced budget for the fourth consecutive year and has built a fund surplus.

Re-establishing Fiscal Health

After many years of being categorized “fiscally stressed” by the state—a factor in the District losing accreditation in 2007—Saint Louis Public Schools is now operating with a balanced budget for the fourth consecutive year and has built an unrestricted fund surplus of \$19.7 million.

The Special Administrative Board has made a firm commitment to eliminate deficit spending and provide a balanced budget. Starting in 2011 and moving forward, only funded initiatives and actions are approved by the SAB. All expenditures are monitored monthly by administration to ensure year-end projections remain favorable. In addition, the District developed a five-year financial plan as one of the key building blocks for attaining and maintaining a healthy, balanced budget and eventual full reaccreditation.

\$56M

Nearly \$56 million from the Desegregation Capital Fund was allocated to SLPS in 2011 to eliminate the fund deficit.





\$7.5M

Nearly \$7.5 million from the Desegregation Capital Fund was allocated to SLPS in 2011 to reimburse the District for transportation costs related to magnet schools.



Magnets: An Option for Every Student

As every parent knows, kids are not “one size fits all,” and Saint Louis Public Schools strives to provide a stimulating academic experience for each of its 27,000 students.

SLPS provides 27 specialty schools for students of all ages, abilities and interests—whether the ultimate career goal is to join a world-renowned dance company, to build the next Mars Rover or to try a case before the U.S. Supreme Court. Magnet schools (24) are public schools without boundaries—open to both city and county residents. Choice schools (3) are open only to city residents.

Admission to a magnet or choice school is based on certain criteria, such as attendance record, grade point average and demographics. Admission is based on a lottery system. To learn more, please visit www.slpsmagnetschools.org.



SLPS is always evaluating the needs and interests of its students. Recognizing the employment opportunities available locally in the healthcare field, SLPS opened the Collegiate School of Medicine and Bioscience in 2013. The school features a rigorous, accelerated college-preparatory curriculum. Currently serving its first class of ninth graders, the school plans to expand by one grade each year until it is a full 9-12 high school.

Early Childhood Education

Research consistently shows that preschool has an overwhelmingly positive impact on a child's performance in school and in life. Believing wholeheartedly in its mission to prepare every student for a successful future, Saint Louis Public Schools provides free, full-day preschool to children ages 3 and 4 who reside in the city of St. Louis.

The program, which combines academic instruction and social-skill building with lots of playtime, has earned a stellar reputation, and some schools that offer it even have wait lists.

SLPS is dedicated to giving children the best possible foundation for college, career and citizenship. In the future, SLPS will continue to look for ways to expand its preschool programs and serve more of the city's youngest learners. For additional information, please call 314-331-6103 or visit www.slps.org/preschool.

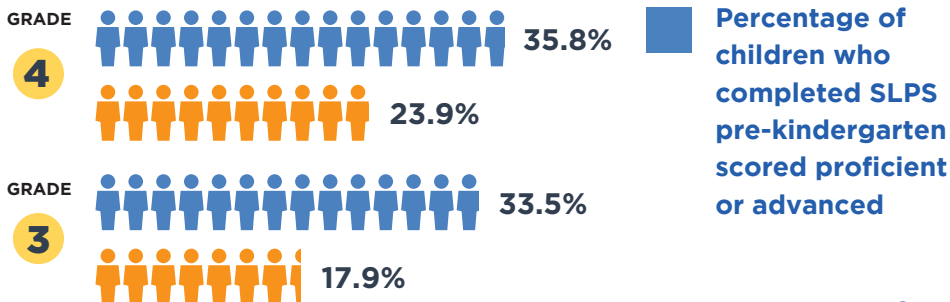
\$23M

More than \$23 million from the Desegregation Capital Fund was allocated to the District in 2011 to expand early childhood and early childhood special education programs over three years.

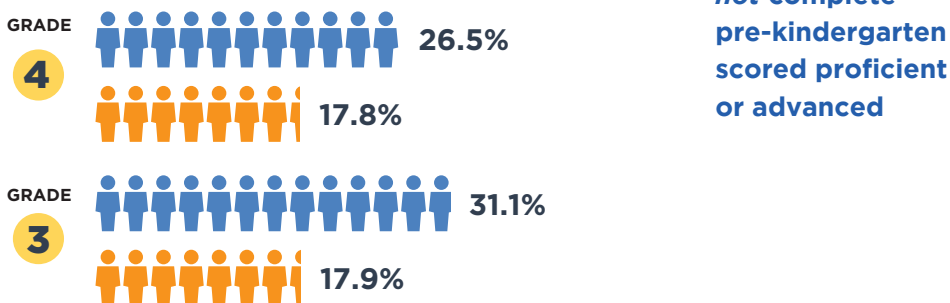


The Power of Pre-K: 2012-13 MAP Results

Communications Arts



Mathematics



Students who complete the District's preschool program outperform their SLPS peers in the third and fourth grades on MAP tests.



"This is the only job I think I would ever do for free if I had to. The kids are so inquisitive. They want to know about everything. That's what makes the learning so much fun, because they really do have questions about every little thing we do."

- Yvette A. Levy

Early childhood teacher at Buder Elementary, 1st Vice President of AFT St. Louis, Local 420

In 2009, Judge Jimmie Edwards opened Innovative Concept Academy in one of the District's school buildings. ICA is the first community partnership school in the country overseen by a judge. It serves SLPS students who have been suspended, MERS Goodwill youths who are on parole and want to get a GED, and Division of Youth Services students who have been expelled under the Safe Schools Act. The school has become a national model, drawing the attention of the U.S. Secretary of Education Arne Duncan and Oprah Winfrey.



Celebrating Community and Corporate Partners

One of the many ways Saint Louis Public Schools supports its students is by building relationships within the community. SLPS is always interested in developing partnerships to serve its youth. To share an idea or learn more about how your business or organization could assist SLPS students, please contact Office of Institutional Advancement Deputy Superintendent Rachel Seward at 314-345-2353. To volunteer, please contact the Department of Volunteer Services at 314-345-4577.



It's the best part of my day when a Wells Fargo Advisors team member stops me in the hallway to say that they've just returned from tutoring or a mentoring session at one of our partner schools. We are excited about the partnership we have built with the SLPS District leadership and the principals and staff at our three partner schools: Dunbar, Carr Lane and Vashon. What started as a programmatic effort with tutoring, incentives and marketing has evolved into a true partnership—with our team members working hand-in-hand with students, teachers and school staff in a way we never could have imagined.

Atul Kamra

Head of Advice at Wells Fargo Advisors



**ST. LOUIS PUBLIC SCHOOLS
FOUNDATION**

CHILDREN. SCHOOLS. ACHIEVEMENT.

Established in 1998 as an independently governed not-for-profit organization, the mission of the St. Louis Public Schools Foundation is to engage and focus local, regional and national support to promote educational success for the Saint Louis

Public Schools. The Foundation works closely with the superintendent and SLPS staff in developing and implementing strategies to secure funding that supports District initiatives. Over the years, the Foundation has raised more than \$13 million to help elevate immediate and long-term educational outcomes for SLPS students. To learn more about the St. Louis Public Schools Foundation or to make a tax-deductible donation that solely supports SLPS initiatives, go to www.slpsfoundation.org



Partnering with SLPS over the past seven years has been a great blessing to Mission: St. Louis and The Journey. The relationships that have been formed between volunteers, school staff and students have led to great success in the classroom. It has also provided a life-giving experience for our people. We are very thankful for the investment and hard work SLPS has done for the children in our city!

Josh Wilson

Executive Director of Mission: St. Louis,
Pastor at The Journey



Working with and for the children of the Saint Louis Public Schools is a great honor and privilege. We see every day the hard work of the teachers and administration, the love and care of the parents and the future possibilities for all the students. Big Brothers Big Sisters of Eastern Missouri treasures the Saint Louis Public Schools.

Becky James-Hatter

President and CEO of
Big Brothers Big Sisters of Eastern Missouri



Breakfast is available at no cost for all SLPS students, and 89% of students qualify for free or reduced-price lunch. The District has improved its collection of free and reduced-price meal applications from 84% in 2008 to 99% in 2013, ensuring more children have access to healthy meals.

Nutritious and Delicious

Eating breakfast or lunch in a Saint Louis Public Schools cafeteria is a smart choice. The District earned an “A” grade last year on the Physicians Committee for Responsible Medicine report card. The District was also named the “most improved” by the Washington, D.C.-based nutrition advocacy group, moving from an “F” grade in 2008 to an “A” in 2013.

Along with educating students about making healthy choices, SLPS has eliminated all fried foods and trans fats from its menus. Meals consist of fruit, vegetables, lean proteins and whole grains—but that doesn’t mean the District has eliminated the types of foods students enjoy. Pizza is still on the menu, but it is made with a whole grain crust. Children still enjoy fries, only they eat baked sweet potato fries instead of those fried in grease. School cafeteria kitchens have been renovated with Proposition S funds, so rather than serving pre-packaged meals, staff prepare lunches fresh on-site.

The District’s new vendor, Southwest Food Service Excellence, specializes in K-12 nutrition and has won over students with popular, healthy items, such as daily salad bars and 100% fruit juices.

District Leadership



Dr. Kelvin R. Adams
Superintendent of Schools



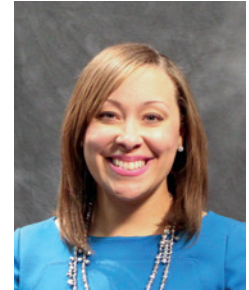
Stacy Clay
Deputy Superintendent
of Student Support Services



Dr. Cleopatra Figgures
Deputy Superintendent of
Accountability and (Interim)
Academics



Mary Houlihan
Deputy Superintendent
of Operations



Rachel Seward
Deputy Superintendent
of Institutional Advancement



Dr. Dan Edwards
Associate Superintendent



Karen Jones
Associate Superintendent



Paula Knight
Assistant Superintendent
of Early Childhood
Education



Debra Moran-Reimoneng
Assistant Superintendent of
SIG Schools



Leon Fisher
Chief Financial Officer



Dr. James Henderson
Chief Human Resources
Officer

The District is making a series of short films to share the many wonderful stories within our schools.

Visit www.slpsstories.org to learn more and watch the films. Many of the photos in the *Report to the Community* are taken from the first film *Parents*.



Saint Louis Public Schools

801 N. 11th Street
St. Louis, MO 63101
314-231-3720

Contact SLPS

Career & Technical Education:	314-345-4530
Communications & Public Relations:	314-345-2367
Community Education:	314-345-4590
Early Childhood:	314-331-6150
Enrollment Information:	314-633-5200
Food Services:	314-345-2308
Gifted & Talented:	314-345-2435
Human Resources:	314-345-2295
Magnet Schools:	314-633-5200
Special Education:	314-633-5344
Student Transcripts:	314-645-2648
Transportation:	314-389-2202
Volunteer Services:	314-345-4577

Websites

Main:	www.slps.org
Magnet & Choice Schools:	www.slpsmagnetschools.org
District Films:	www.slpsstories.org
Twitter:	@SLPS_INFO
Facebook:	Search for "Saint Louis Public Schools"

To download the e-reader version or a PDF of the Report to the Community, please go to www.slps.org/report.